



Total Solution Provider in Saw Device

SA12019BV

120.1MHz IF SAW Filter
19.77MHz Bandwidth
Revision 0 : 10. March. 2008



- Electrical Characteristics
 - Package Dimensions
 - Testing Environment
 - Frequency Characteristics
-

SAWNICS Inc.

460 Cheonheung-ri, Seonggeo-eup, Cheonan-si, Chungcheongnam-do, 330-836 / Korea.
Tel: +82 41 550 9372 / Fax: +82 41 550 9399 / www.sawnics.com

□ Electrical Characteristics

Maximum Ratings

Parameters Description	Unit	Minimum	Typical	Maximum
Operating Temperature Range	°C	-	25	-
Storage Temperature Range	°C	-40	-	85
Maximum DC Voltage	V	-	-	10
Maximum Input Power	dBm	-	-	10
Source Impedance (single ended) ⁽¹⁾	Ω	-	50	-
Load Impedance (single ended) ⁽¹⁾	Ω	-	50	-
Package type & size	V			
Length x Width	mm ²	-	13.3 x 6.5	-
Height	mm	-	-	1.8

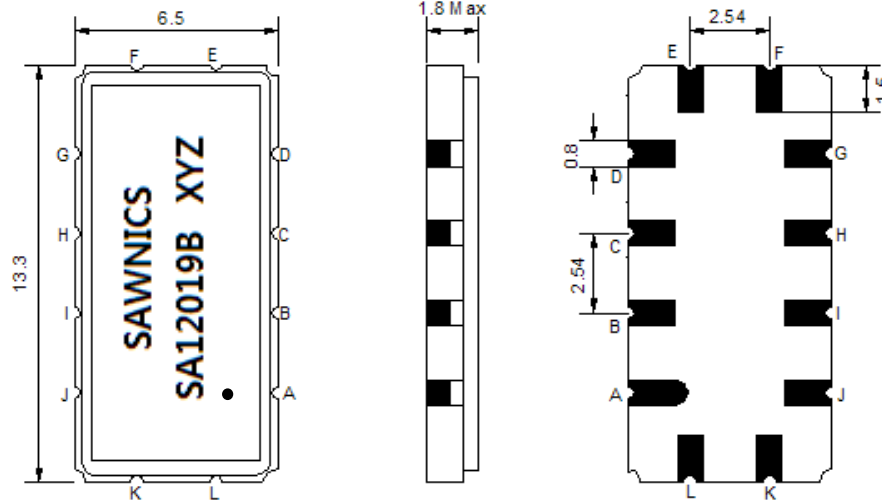
Electrical Specification

Parameters Description	Unit	Minimum	Typical	Maximum
Center Frequency (Fo)	MHz	120.05	120.1	120.20
Insertion Loss at Fo	dB	-	20.5	23.0
Temperature Coefficient	ppm/°C	-	-72	-
Amplitude Ripple within fo ±9.65 MHz	dB _{p-p}	-	0.65	1.0
Group Delay Variation within fo ±9.65 MHz	nsec	-	50	80
Absolute Delay at Fo	µsec	-	1.59	-
Bandwidth at -1.0 dB	MHz	19.50	19.77	-
Bandwidth at -3.0 dB	MHz	-	20.18	-
Bandwidth at -40.0 dB	MHz	-	21.90	22.0
Relative Attenuation:				
Fo ±14.42 MHz	dB	-	55	
Lower Sidelobe	dB	-	52	-
Upper Sidelobe	dB	-	52	-

Notes : (1) With Matching Network (Ref. Testing Environment Circuit as shown below).

Those impedances could be modified with different impedance values and/or structures, if necessary.

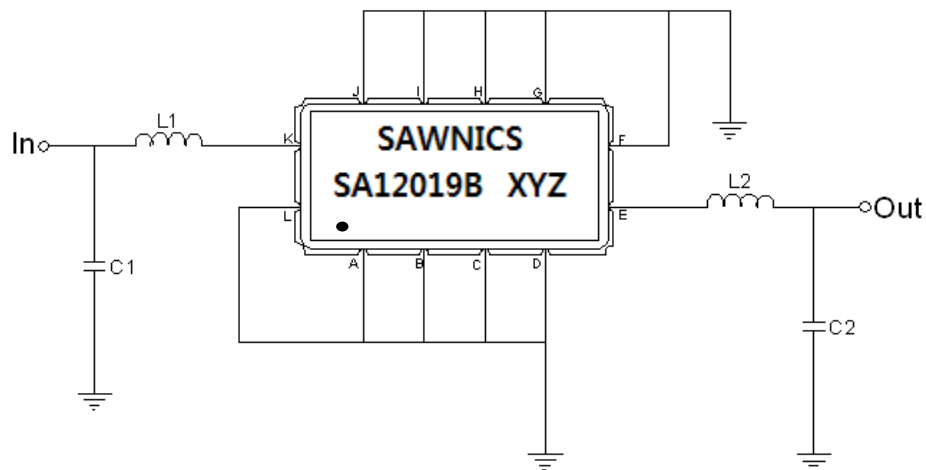
Package Dimensions



- ① SAWNICS: Brand
- ② SA12019B: Model Name
- ③ X : Date Code (Year)
- ④ Y : Date Code (Month)
- ⑤ Z : Date Code (Date)
- : Index Dot

Pin Description	
A, B, C, D, F, G, H, I, J, L	Ground
K	Input
E	Output

Testing Environment



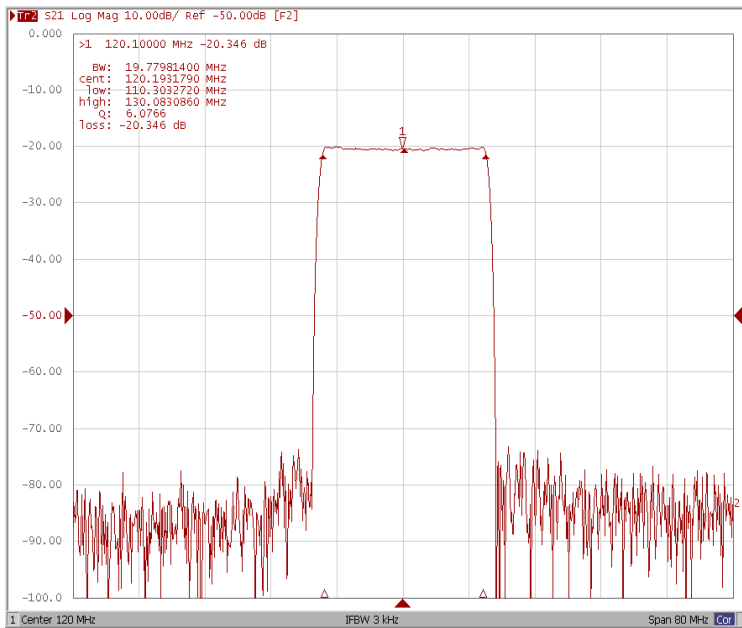
Test Fixture & Values	
Input	L1=100nH, C1=10pF
Output	L2=47nH, C2=16pF
Source/Load Impedance	50 Ω



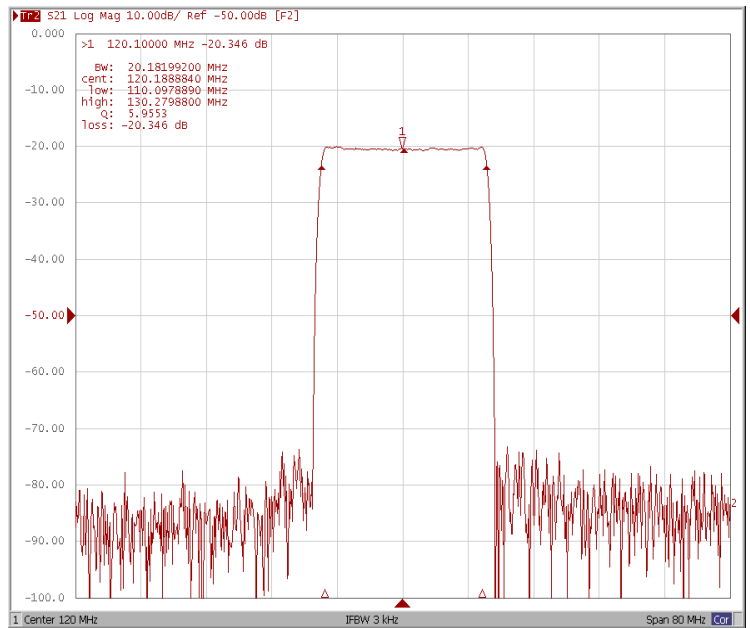
Frequency Characteristics

Frequency Response

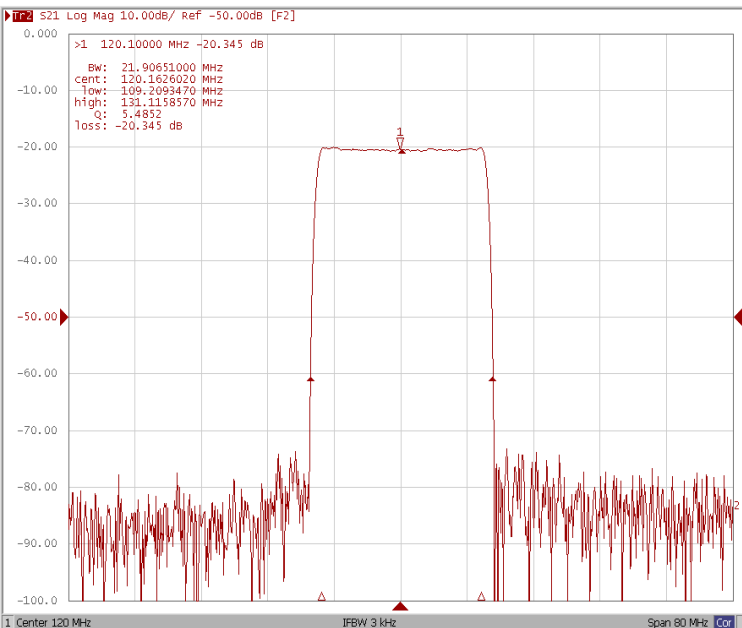
Bandwidth at -1.0 dB



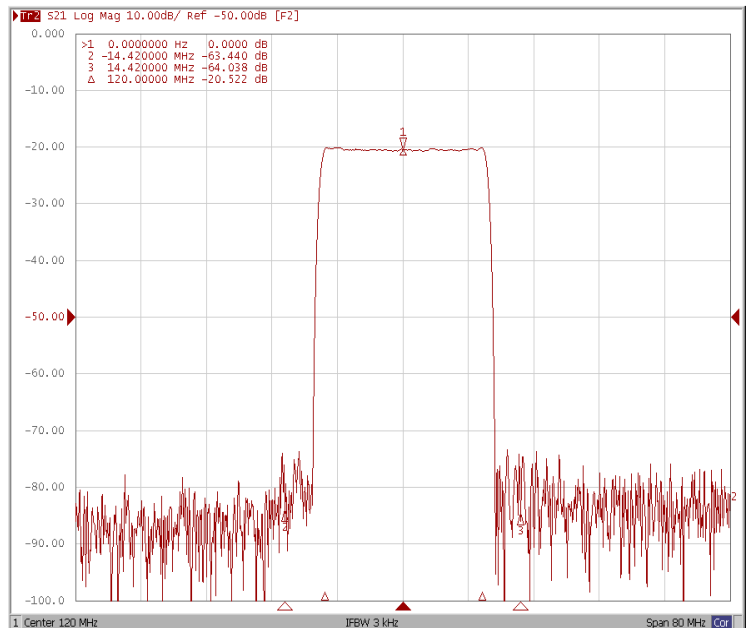
Bandwidth at -3.0 dB



Bandwidth at -40.0 dB



Attenuation Fo±14.42MHz

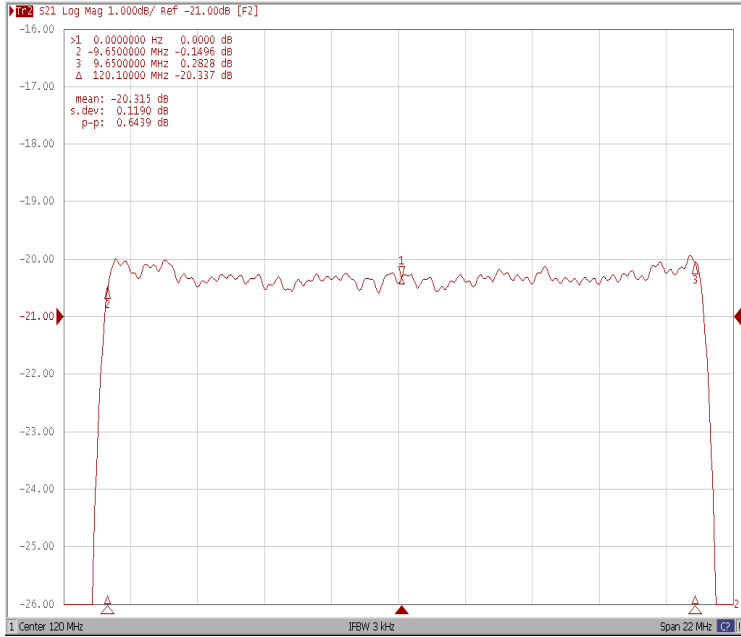




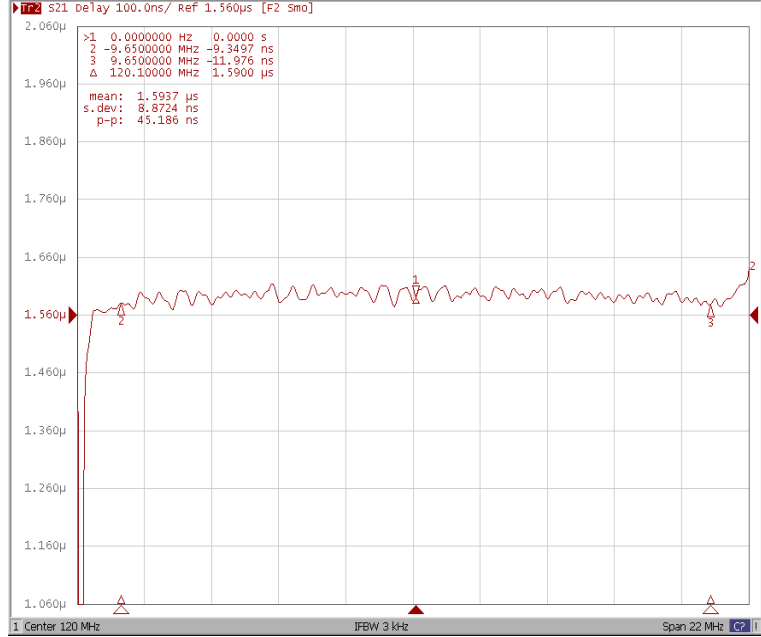
Frequency Characteristics

Frequency Response

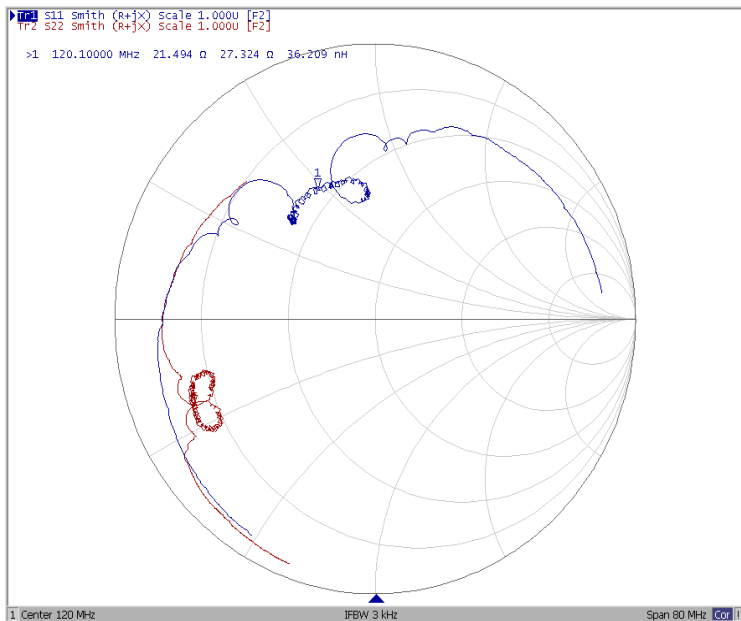
Ripple Variation Fo±9.65MHz



Group Delay Variation Fo±9.65MHz



Smith Chart



SWR

